

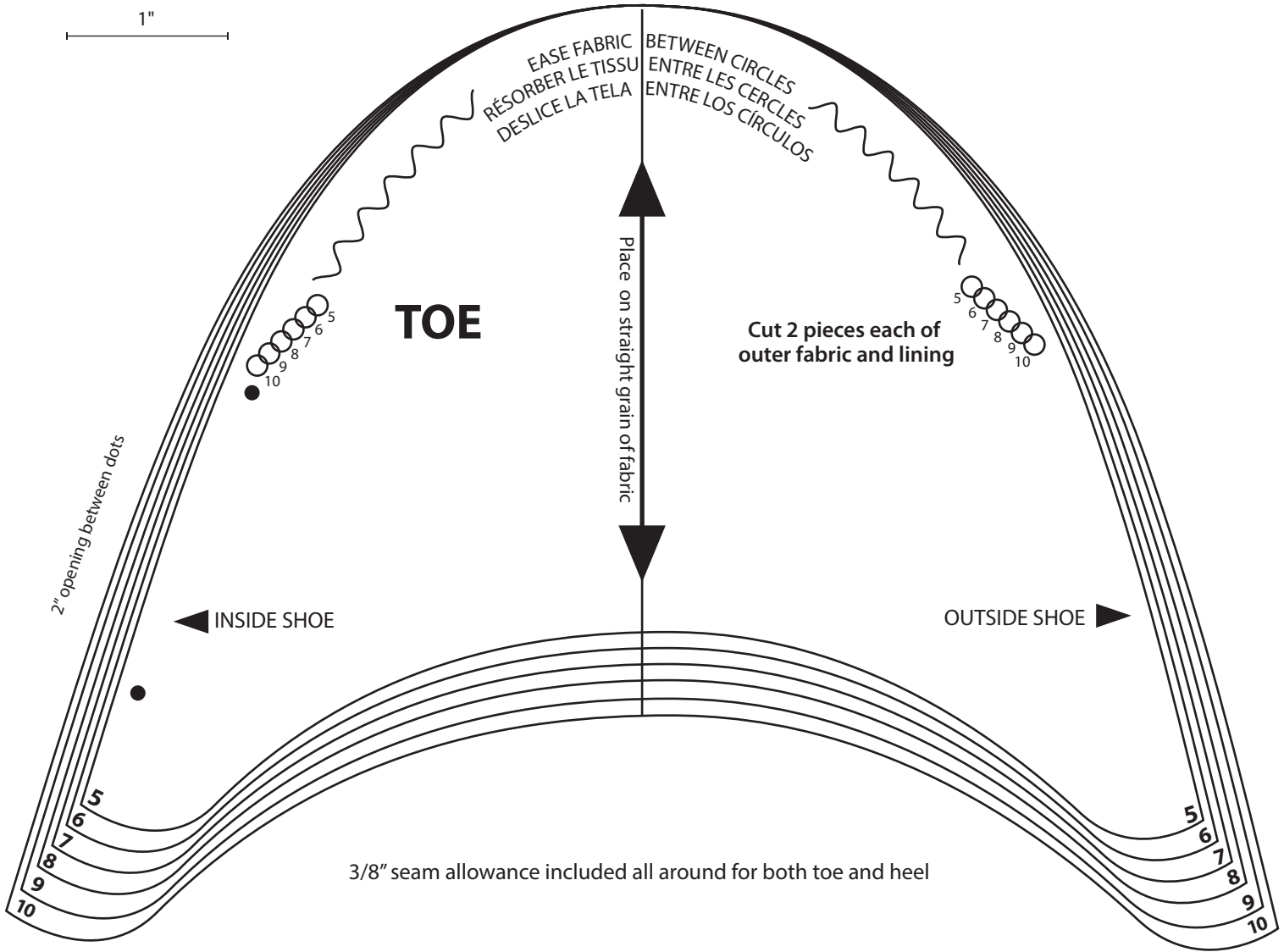
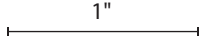
This pattern is for adult shoe sizes:  
 5 = Size 5  
 6 = Size 6  
 7 = Size 7  
 8 = Size 8  
 9 = Size 9  
 10 = Size 10

**Important printing instructions:**

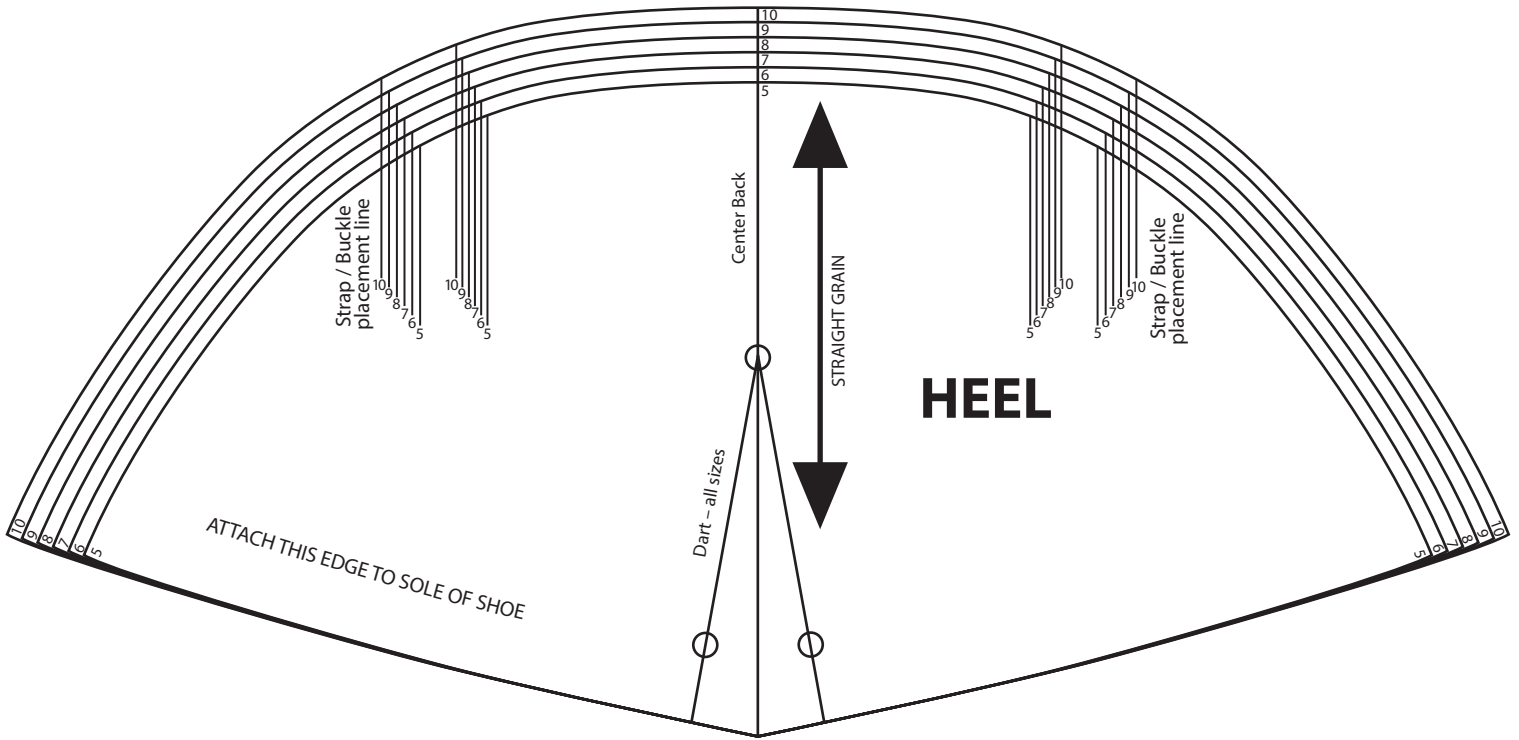
When you print this PDF pattern, make sure that you select "actual size" in your printing preferences.

Use the below measuring guide to confirm that your pattern has been printed to the actual size. The line below should measure exactly one inch.

This pattern must be printed on legal size paper.



3/8" seam allowance included all around for both toe and heel



**ESPADRILLE WEDGE PATTERNS**

Choose correct size.  
 Cut on appropriate line.

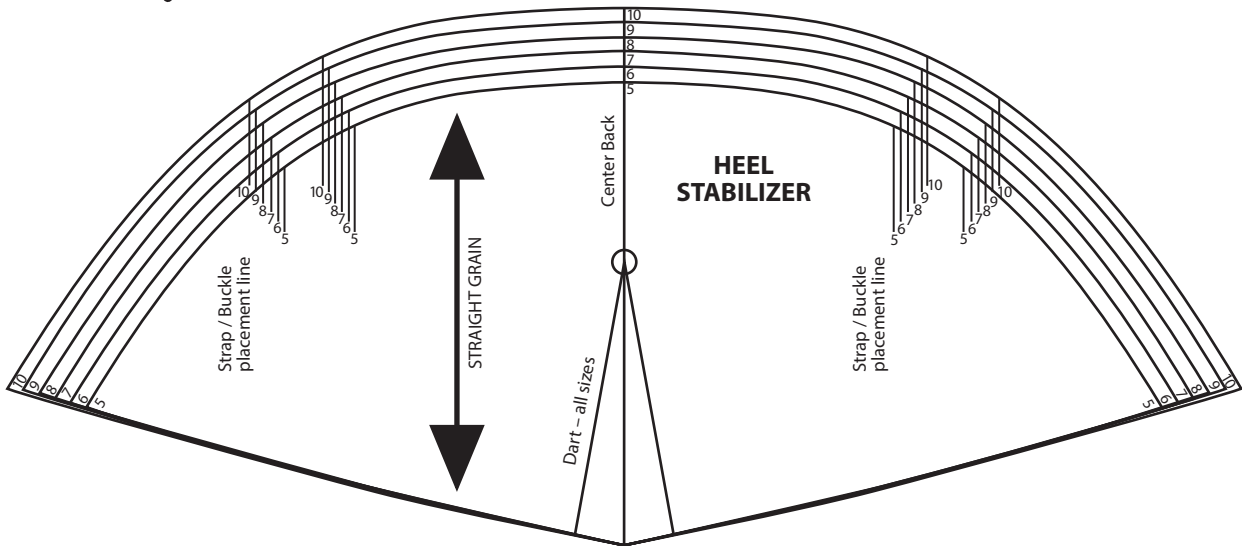
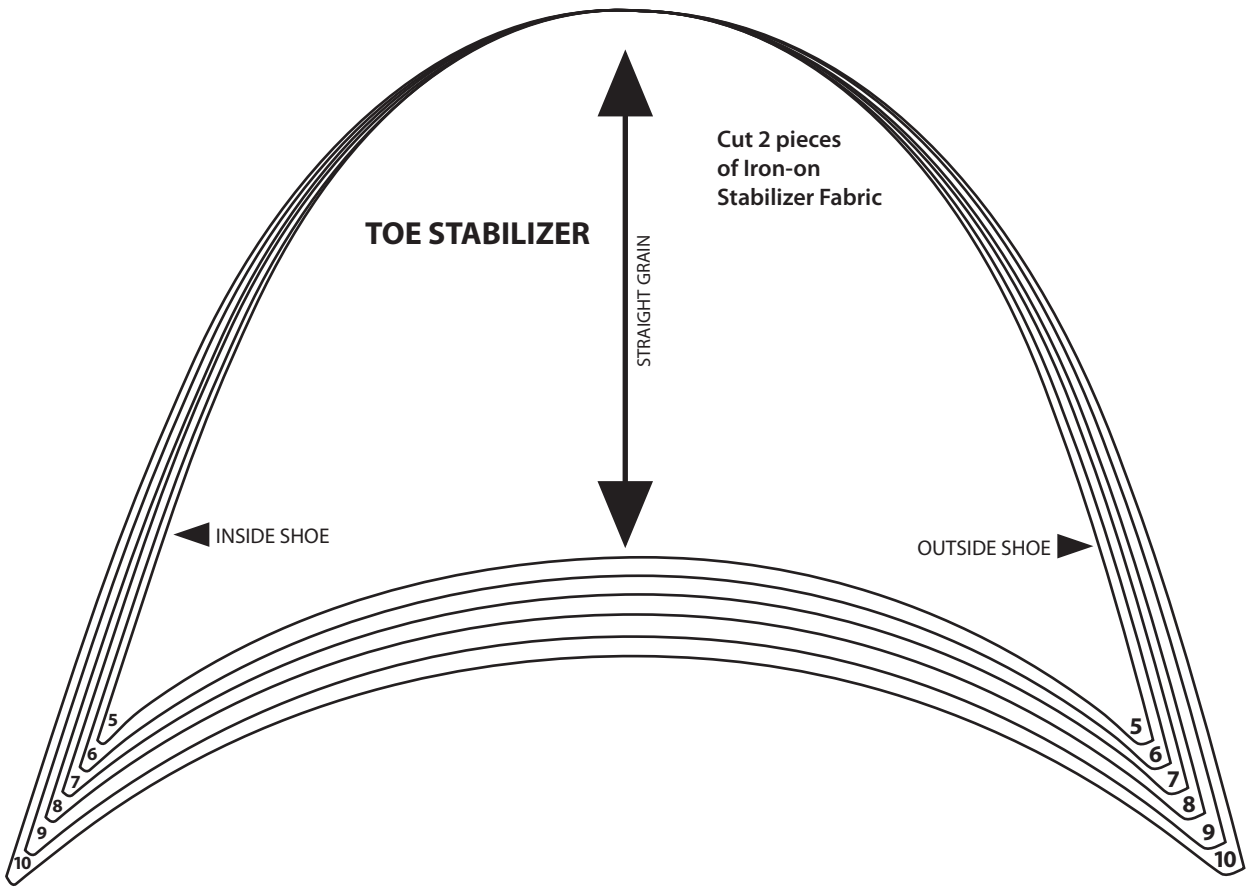
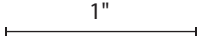
This pattern is for adult shoe sizes:  
5 = Size 5  
6 = Size 6  
7 = Size 7  
8 = Size 8  
9 = Size 9  
10 = Size 10

**Important printing instructions:**

When you print this PDF pattern, make sure that you select "actual size" in your printing preferences.

Use the below measuring guide to confirm that your pattern has been printed to the actual size. The line below should measure exactly one inch.

This pattern must be printed on legal size paper.



**ESPADRILLE WEDGE PATTERNS**

Choose correct size.  
Cut on appropriate line.